

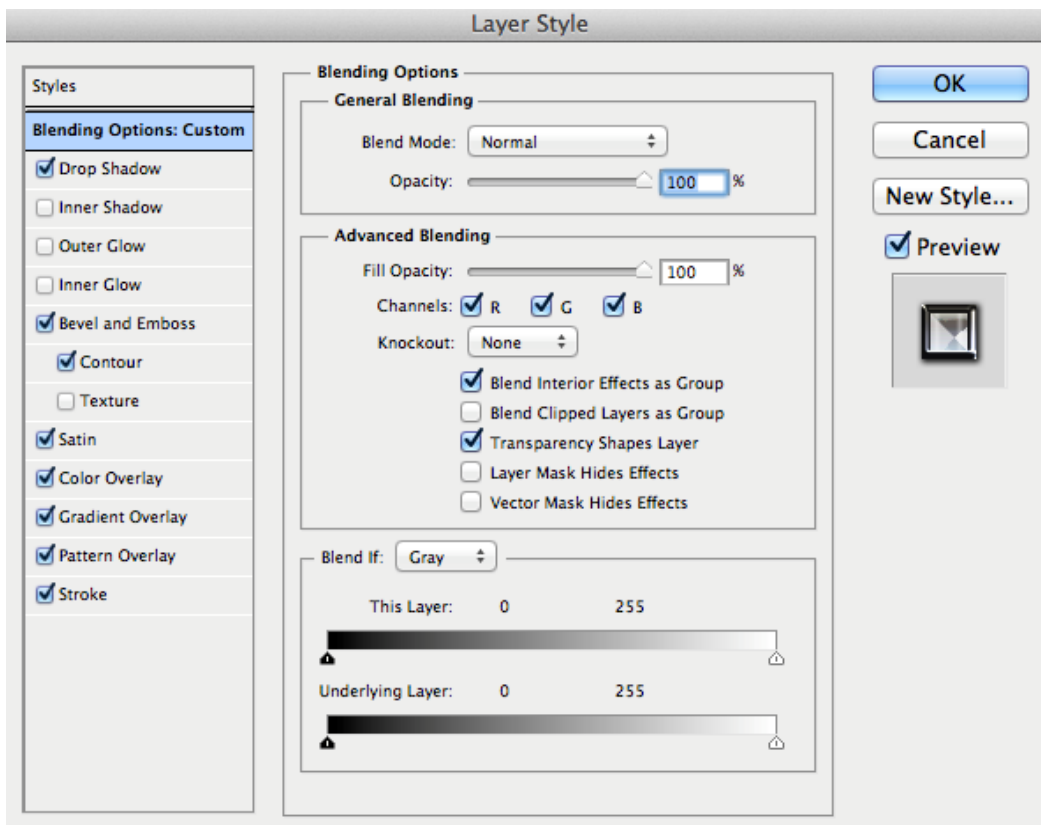
### 3 Retro Text Styles

#### Scaling

All styles are scalable but please note that they work best with larger sizes.

When scaling the styles you may need to adjust a few things in the Blending Options but that is easily done and should take no more than a few clicks!

A common feature for all styles that may require changes is the “Drop Shadow”. Double click the text layer to enter Blending Options. Choose “Drop Shadow”:



Usually you just change the Opacity, Distance, Spread and/or Size.

If the styles have the following ticked (activated) you may need to change settings:

- “Bevel and Emboss” (change Depth and/or Size)
- “Outer Glow” (change Size)
- “Inner Glow” (change Size)
- “Stroke” (change Size)

#### Fonts

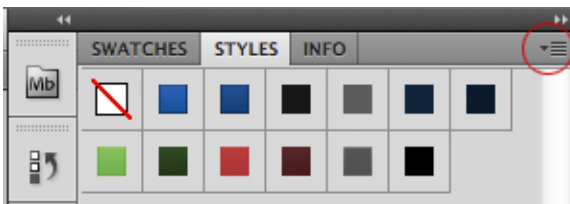
Zeroes (<http://www.dafont.com/zero-threes.font>)

## Installing Text Styles

Double click the .asl file (3 Retro Text Styles) included in the .zip file and locate your new styles in the styles section. Or you could drop the file in the correct directory.

- *Styles in Windows:* Program Files -> Adobe -> Adobe Photoshop X -> Presets -> Styles.
- *Styles in Mac:* Library -> Application Support -> Adobe -> Adobe Photoshop X -> Presets -> Styles.

To load styles in Photoshop click the small arrow with lines beside it here:



And select "Load Styles" and locate your new styles.